

WE ARE
CARE-GIVERS,
NOT GERM-
SPREADERS.



PATIENT NEAR SURFACES
KEY IN INFECTION PREVENTION

PATIENT CARE IS TOUGH. CONVINCING STAFF TO CLEAN SURFACES AND EQUIPMENT IS EVEN TOUGHER.

You talk, we listen. Because as a hygienist, you have a very demanding job that requires skills and nerves. B. Braun knows that environmental cleaning is a fundamental principle of infection prevention in healthcare settings. Contaminated hospital surfaces play an important role in the transmission of dangerous pathogens, including antibiotic-resistant organisms. Therefore besides the 5 Moments for hand hygiene, appropriate disinfection of surfaces and equipment is necessary to reduce exposure.

Clinical and environmental services staff are faced with distinct challenges as pathogens are capable of surviving for prolonged periods of time on surfaces and may be transmitted to new room occupants following discharge of colonized or infected patients. Effective strategies must therefore be put in place to assess the effectiveness of environmental cleaning and disinfection in healthcare settings to reduce healthcare associated infections HAIs.

1 ECRI Institute (2018). Health Technology Hazards

2 WHO; Presentation: WHO_Facts_DRT661; „Health Care-Associated Infection and Hand Hygiene Improvement - Slides for the Hand Hygiene Co-ordinator von der WHO“, under <http://www.who.int> (accessed at 2 May 2016)

3 European Centre for Disease Prevention and Control. Antimicrobial resistance surveillance in Europe 2015. Annual Report of the European Antimicrobial Resistance Surveillance Network (EARS-Net). Stockholm: ECDC; 2017

4 WHO. http://www.who.int/gpsc/5may/MDRO_literature-review.pdf?ua=1 (accessed 01.02.2016)

1 OF 10

of the Top Health Technology hazards was that improper cleaning may cause device failure and are a potential for patient injuries¹

Consequences

16 MILLION

patients every year die from hospital-acquired infections¹

5–10 %

of hospitalized patients are infected each year by pathogens within the care environment.

Source: Centers for Disease Control and Prevention

INCREASING
EVIDENCE

that contamination of reusable medical equipment is a key factor in the spread of HAI-resistant organisms⁴

Antimicrobial resistance is a

SERIOUS
THREAT

to public health³



DISINFECTING SURFACES IS BORING. PATIENTS DON'T COME FOR EXCITEMENT.

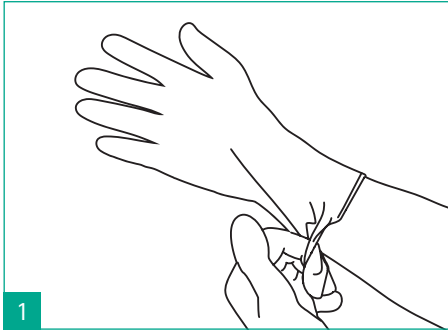
B. Braun supports you with concepts and training materials in order to keep the performance in environmental cleaning high. Furthermore B. Braun offers a full portfolio of high-quality products especially designed for patient-near surfaces and medical devices that provide a best performance and material compatibility.

Check out our range on
www.bbraun.com/infection-prevention

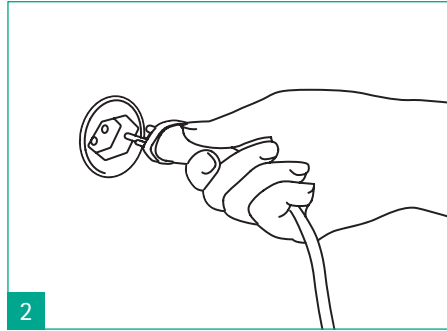


Meliseptol® Wipes sensitive
Solution from Meliseptol®, Foam pure
in different packages for diverse needs.
EN 16615 (4-field test) approved
and 90 days in-use stability.

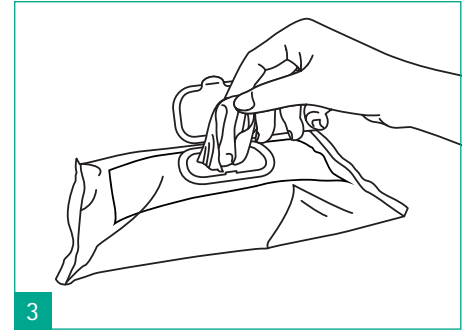
PRESERVE THE VALUE OF YOUR INFUSION PUMP



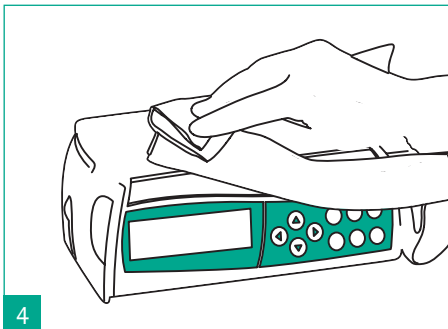
1 Perform hand hygiene with an alcohol based hand rub or by washing with soap and water. Wear gloves.



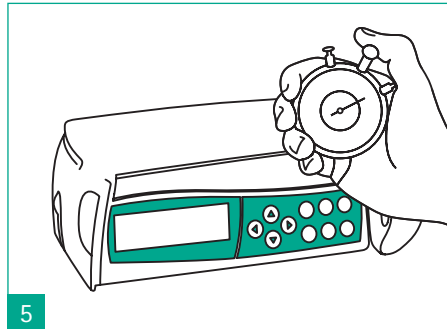
2 Switch off electrical devices and disconnect the electrical plug. Let hot surface areas cool down before disinfection.*



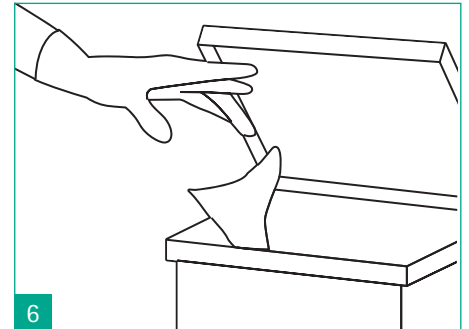
3 Use Meliseptol® Wipes sensitive to clean and disinfect the device.



4 In cases of visible contamination, the procedure must be carried out in two steps:
a) Remove all visible contaminants prior to the disinfection by using Meliseptol® Wipes sensitive. Discard the tissue after.
b) Take a new Meliseptol® Wipes sensitive and carry out the disinfection in the normal manner. Discard the tissue after use.



5 Wipe the visible clean surface to the point that it is completely wet. Keep the surface wet until the exposure time has elapsed. Allow the surfaces to dry completely. Do not wipe the surface dry.



6 Remove gloves. Then perform hand hygiene with an alcohol based hand rub or by washing with soap and water.

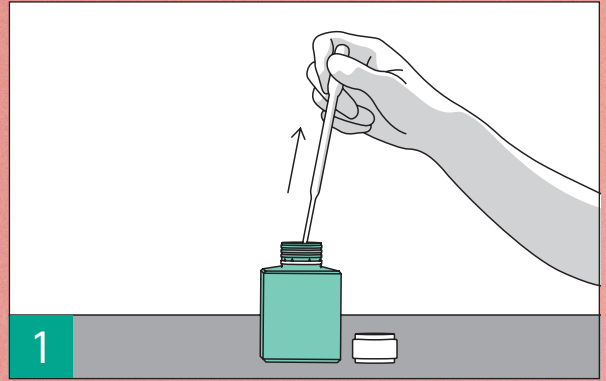
*When the pump is in use wipe only the surface and lateral side (at least once per day)

THERE'S ONE WAY TO START IMPROVING COMPLIANCE. BY MEASURING IT.

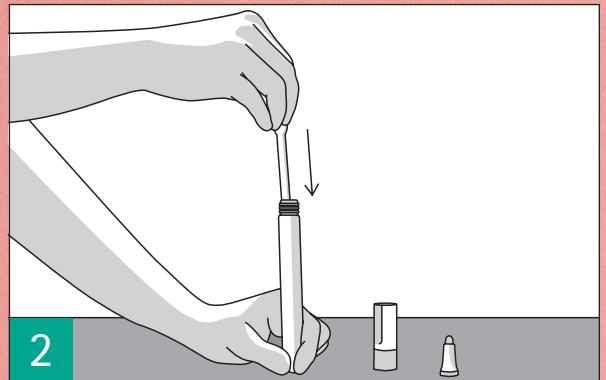
With growing concern that room surfaces and devices may still be inadequately disinfected following patient discharge compliance measures need to be put in place.

Visual inspection is the simplest method for evaluating cleanliness, but gives only hints if a surface was cleaned or not. Another technique is the use of invisible fluorescent markers placed on high-touch room surfaces with UV light inspection following cleaning. This approach provides immediate, direct feedback to environmental services personnel.

B. Braun supports you with modern tools to improve practices and the creation of hygiene plans.



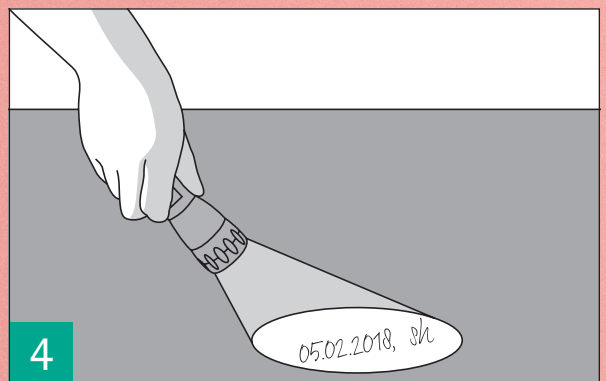
1 Use pipette to fill up Fluo-Add solution.



2 Open marker and fill solution in marker.

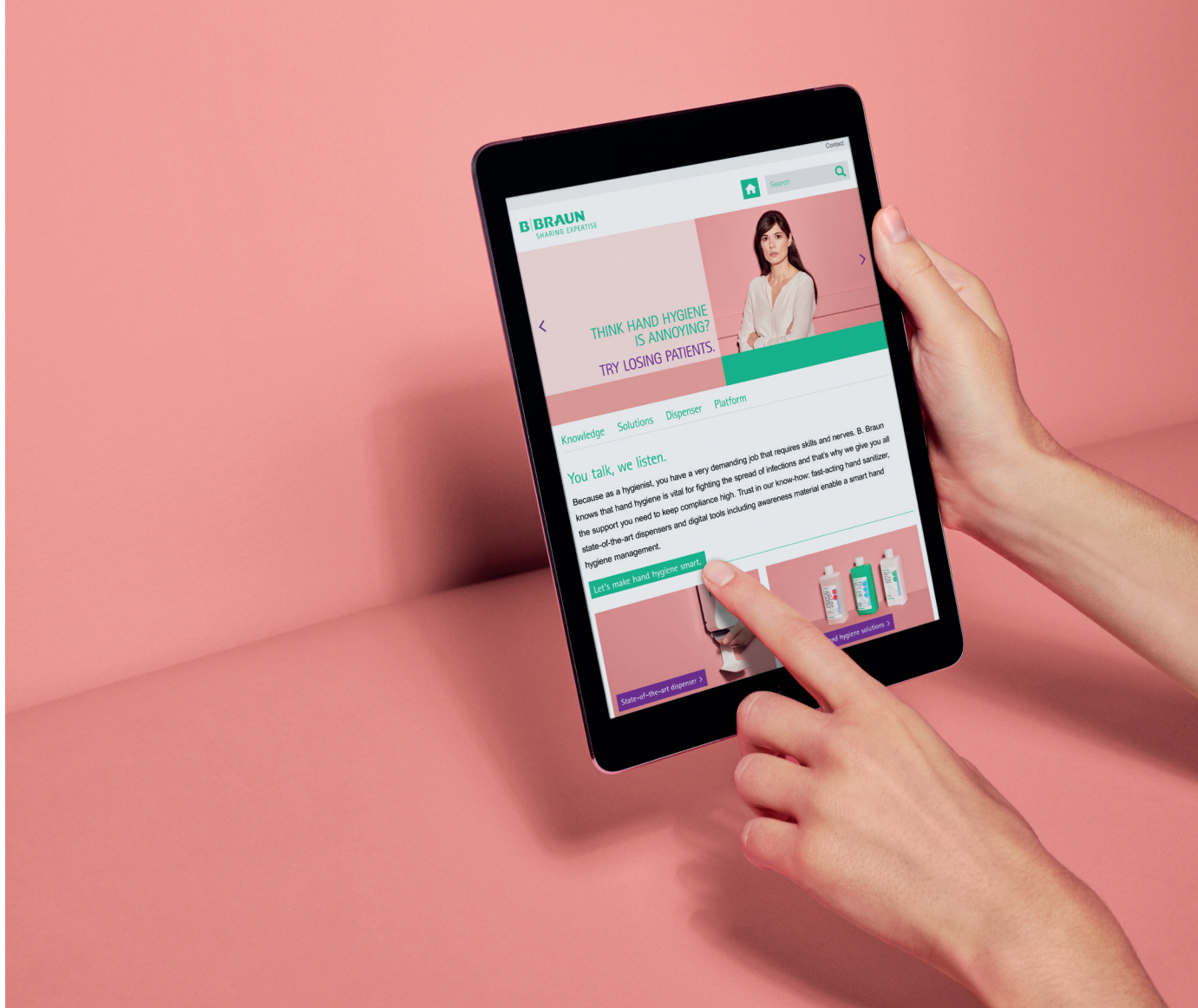


3 Mark surface with date or compliance number.



4 Check with UV-light if the surface was disinfected.





DON'T GO VIRAL.

As a hygienist, you can get sick and tired of sounding like a broken record. To change that, just adopt a different tone: The new B. Braun platform supports you with smart digital tools and attractive awareness material. Easily customizable templates support you with your activities in IPC.

Be a part of the IPC movement.

www.smarthygiene-bbraun.com

PRODUCT		SIZE	REF
60 pcs	dispenser box	15.2 cm x 20 cm	19582, 19867
60 pcs	refill pack	15.2 cm x 20 cm	19530, 19868
100 pcs	flow pack 100	18 cm x 20 cm	19894
42 pcs	flow pack XL	24 cm x 30 cm	19893
Surface Check			3908476
Fluo-Add 100ml			180127

B. Braun Medical AG | Infection Control | Seesatz 17 | CH-6204 Sempach

Phone +41 58 258 50 00 | Fax +41 58 258 60 00 | info.bbmch@bbraun.com | www.bbraun.com/infection-prevention