



Xperius Ultrasound System

Responsive | Advanced | Simple



Reimagining Regional Anesthesia with Ultrasound Imaging

Enhancing Regional Anesthesia procedures by combining more than 300 years of experience in health care

B. Braun and Philips have listened to clinicians all over the world to understand the concerns and challenges you face every day with common ultrasound systems. Our first solution: Xperius, designed to advance the daily practice of Regional Anesthesia and simplify the process of ultrasound imaging. Together – every day – we will continue to create innovative solutions in Regional Anesthesia and Vascular Access.

B | BRAUN | PHILIPS

Xperius Ultrasound System

Designed around you to seamlessly fit
Ultrasound into your care area

RESPONSIVE

Advanced Ergonomy – A new way of working

Xperius is a Point of Care Ultrasound system for diagnostic and interventional purposes dedicated to enhance ultrasound guided Regional Anesthesia and Vascular Access applications. The system offers a high degree of mobility and flexibility combined with an ergonomic design to improve your daily practice.




A fully articulating arm allows easy adjustments of the ultrasound monitor position and the angle of the screen for ergonomic use and better view on the screen. It allows you to bring the screen and touch controls at arm's length so you can operate the system by yourself. With 4 transducer holders, convenient storage and a work desk you can easily access everything you need during the procedure.





» Usually, it's difficult to use bulky ultrasound devices in all the narrow places you need them to be. You trip over its feet, you can't place your display where you can see it...I need a device that works right at my hand. «

(Feedback from clinicians which inspired us to develop Xperius Ultrasound System)



Intuitive Interface & Advanced Technology

-  Multiple Presets - 4 specific ones for Regional Anesthesia / Vascular Access
-  intuitive touchscreen
-  start scanning in a few seconds
-  built-in Wi-Fi for DICOM data transfer
-  Needle Vis Technology

Ready-to-go for Bedside Scanning

-  long lasting battery up to 3 h of scanning
-  lightweight and easy to handle

Articulating Arm

-  flexible rotating in every direction
-  height-adjustable

Core Ultrasound Technology

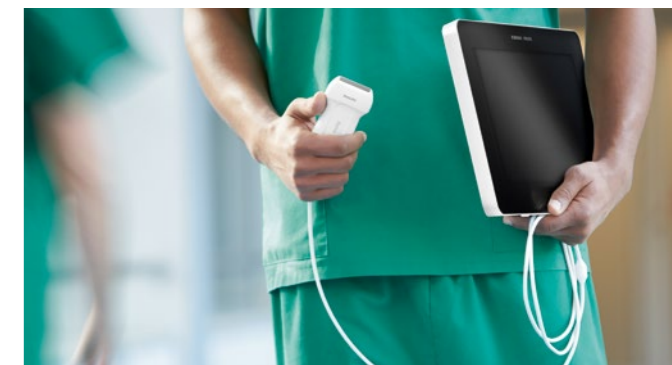
-  transducer with USB connector

Convenient Storage

- everything needed for procedures is within the reach



FIGURE 1 | Thanks to the Articulating Arm you can find your most comfortable position for ultrasound imaging.



Xperius Mobile Workspot (sold separately)

Take advantage of the portable device for quick bedside scanning or interventions in your facility, on-the-go and satellite locations.



- ✓ Advanced Ergonomics
- ✓ Convenient Accessory Bins
- ✓ High Mobility & Portability
- ✓ Designed by Philips & B. Braun

Xperius Ultrasound System

High performance technology makes getting a great image easy

ADVANCED

Expect exceptional image quality – You will get it without much tweaking

The alliance leveraged Philip's decades of experience and leadership in image guided therapy to deliver high quality clinical images to the Point of Care in Anesthesia.

Xperius provides high quality images of nerves and tissue structures for confident diagnoses and precise needle guided procedures. And the predetermined settings are designed so you can spend less time adjusting controls and more time focusing on your patients.



» I need a great Ultrasound Image within seconds. Today more than ever, it is essential to have an Ultrasound System with imaging features helping me to perform exams and procedures more accurately and faster. «

(Feedback from clinicians which inspired us to develop Xperius Ultrasound System)

Advanced Philips Technology inside gives you pure simplicity outside – curved and linear transducer with USB connector

The Xperius core imaging technology has been packed into a transducer (L12-4ub, C5-2ub) that is small, light-weight, and comfortable. It offers an exceptional image quality including the whole set of applications for superficial and deeper blocks.

- ✓ High Definition Imaging
- ✓ Enhanced Needle Visibility
- ✓ New Generation of Probes



FIGURE 2 | Easy and quick attachable USB port connection at the transducer and at the Xperius Cart System.



FIGURE 3 | Scan of a Spiral Nerve

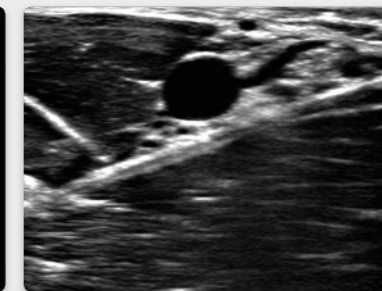


FIGURE 4 | Scan of an Axillary Nerve

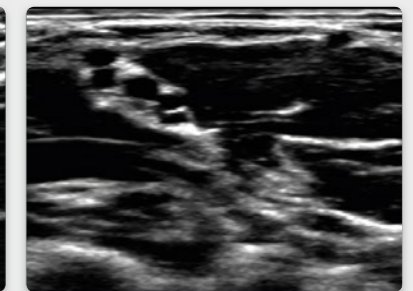


FIGURE 5 | Scan of a Brachial Plexus

High quality imaging improves anatomical visualization

It is not just the advanced transducer technology which improves the imaging – with its high refresh rate of Ultrasound images, Xperius allows fast scanning and better fluid injection control.

Vision technologies that provide high quality images quickly and easily

- **SonoCT** acquires multiple lines of sight and compounds them in real time. Your images have fewer artifacts, improved contrast resolution, and better defined tissue margins
- **XRES** works in tandem with SonoCT to further reduce artifacts, and improve contrast resolution and border definition
- **AutoSCAN** automatically identifies tissue type and continuously adjusts the image gain while scanning to achieve enhanced uniformity and tissue brightness
- Enhanced Needle Visibility through innovative **Needle Vis Technology**

Xperius Ultrasound System

Intuitive and easy to use

SIMPLE

Xperius – Allows you to quickly and comfortably conduct exams

Xperius comes with intuitive touch and gesture controls that you already know from your smart devices – to keep your focus on your work and not on the controls. Its simple interface workflow supports daily routines and provides specific presets for procedures in Regional Anesthesia and Vascular Access.



» Most ultrasound systems I know aren't user-friendly at all. Too many options, too many menus, too many buttons. I just want to perform procedures quickly and easily. I need to focus on my work, not my tools. «

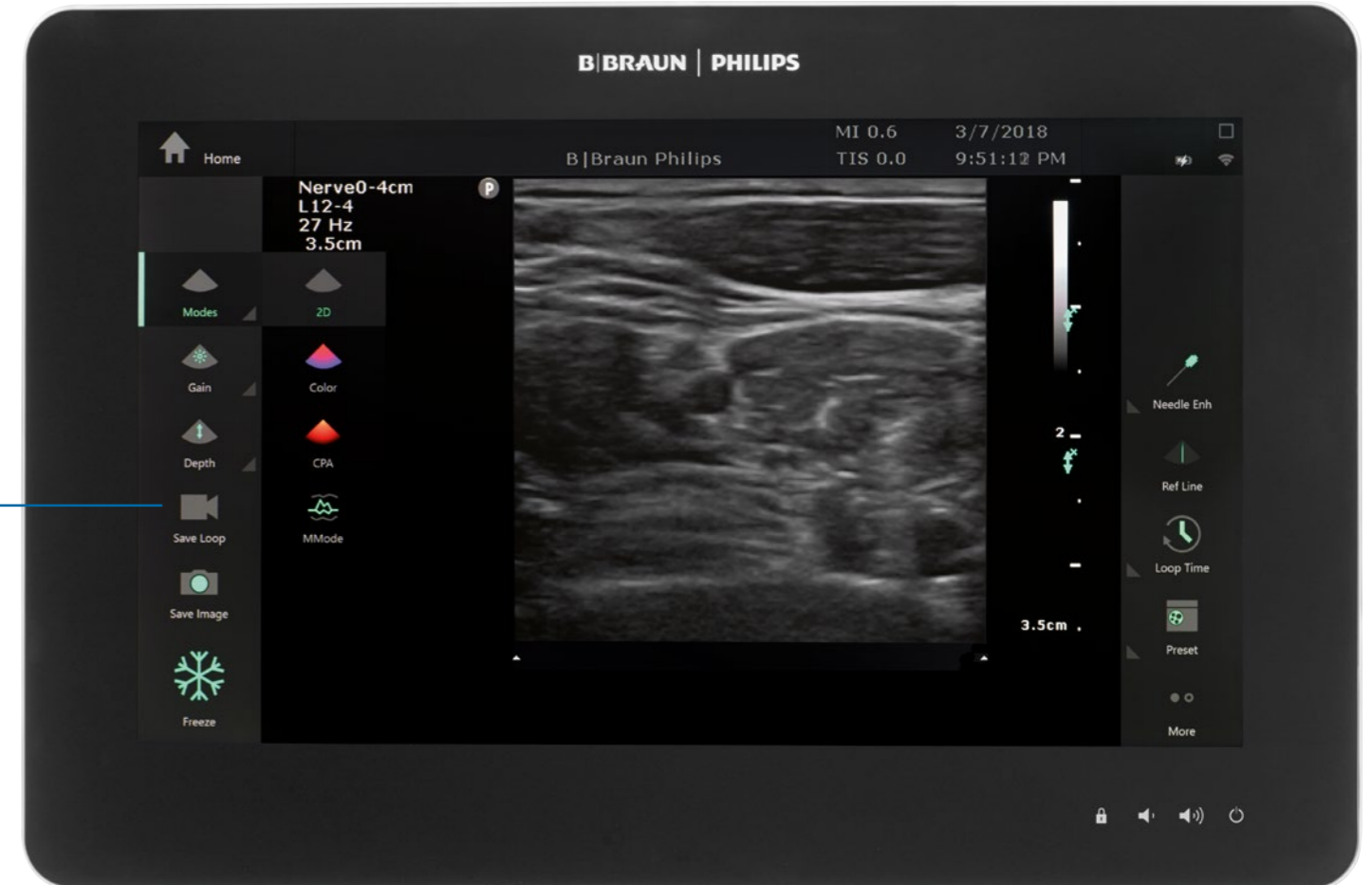
(Feedback from clinicians which inspired us to develop Xperius Ultrasound System)

Intuitive touchscreen

You can use many familiar touch-screen gestures:

- just tap on icons to open features
- pinch zoom in and out of images
- wipe to adjust gain and depth
- pan the screen to adjust your Doppler gate
- scroll through images

- ✓ Improved Workflow
- ✓ Intuitive User Experience
- ✓ Touch Screen & Gesture Control
- ✓ Dedicated Regional Anesthesia & Vascular Access Presets
- ✓ High Connectivity



You'll quickly become comfortable with Xperius touchscreen user interface



The multi-touch ultrasound system delivers just the right features and on-screen controls you need. Xperius makes it easy to provide care in less time. That is good for your patients and good for your practice.




- 4 Presets for Regional Anesthesia and Vascular Access allow to quickly perform exams.
- Additional Presets for Lung and FAST* diagnostics are available.
- Wake the system from sleep mode and start scanning in a few seconds.
- Battery lasts for over 2 hours of back-to-back scanning, reducing the need to constantly look for power outlets.
- Built-in Wi-Fi for DICOM data transfer to hospital and cloud PACS, to easily share and store images.

* Focused assessment with sonography for trauma – used to check for blood around the heart or abdominal organs after trauma.

Product Information

For Xperius and complementary products

Xperius	Description	Units per CAR	Code No. (REF)
Xperius Cart System with 1 transducer L12-4			
	<ul style="list-style-type: none"> • Type of unit: Compact Cart based Point of Care Ultrasound System with fully articulating arm and Linear L12-4 • Dimensions: 132.5 cm x 56.0 cm x 66 cm (H/W/D) • Weight: 34.0 kg • Display: 39.6 cm (15.6 in) flat-panel touch-screen • Imaging mode keys: 2D, Color Doppler, Color Power Angio (CPA), M-Mode • Image Processing: AutoSCAN, XRES, Duplex Imaging, 5x Pan/Zoom, Dynamic range up to 170 dB (full time input) • Gray shades: 256 (8 bits) in 2D • Needle Visualization Software: Needle Vis • Image enhancement controls: SonoCT, XRES • Patient-specific optimization keys: AutoSCAN, iSCAN • Data: 256 GB Hard Drive, loop length up to 50 seconds, Data Drive Encryption (Patient Data), Cine review • Connectivity: HDMI, Speakers, 6 USB ports on Cart, Ethernet, WiFi, DICOM, MWL Philips Remote Services • Power Supply: Rechargeable lithium ion battery, AC Adapter • Battery operating time: up to 3 hours 	1	989605470201
Xperius Stand-alone Tablet with 1 transducer L12-4			
	<ul style="list-style-type: none"> • Type of units: Point of Care Tablet Ultrasound System with Kickstand and Linear 12-4 • Dimensions: 28 cm x 42 cm x 5 cm (H/W/D) • Weight: 3.6 kg 	1	989605476671

Xperius Upgrade Items	Description	Units per CAR	Code No. (REF)
Single Transducer Linear			
	<p>L12-4 broadband linear array transducer</p> <ul style="list-style-type: none"> • 12 to 4 MHz extended operating frequency range • Aperture size: 34 mm • High resolution imaging for shallow applications • Center line marker • USB transducer with replaceable cable 	1	989605451171
Single Transducer Curved			
	<p>C5-2 broadband curved array transducer</p> <ul style="list-style-type: none"> • 5 to 2 MHz extended operating frequency range • 50 mm radius of curvature • High resolution imaging for deeper applications • Center line marker • USB transducer with replaceable cable 	1	989605451181
Peripherals			
	<p>Printer Sony UP-D711MD</p> <ul style="list-style-type: none"> • High-quality digital graphic printer • Easy to connect within dedicated Xperius printer slot • Dimensions: 7 cm x 14 cm x 12.5 cm (H/W/D) • Weight: 1 kg • Monochrome, black/white, A7 paper size 	1	989605452822

COMPLEMENTARY PRODUCTS




ProSet Contiplex® S Ultra 360

Complete procedure kit for continuous nerve blocks for ultrasound visualization:

- Contiplex® S Ultra 360 needle with integrated wire
- Hemostasis Valve/Sideport assembly with 20 in. (51 cm) tubing
- 20G Perifix® ONE catheter with threading assist guide
- Perifix® catheter connector, Perifix® (bacteria) filter, Perifix® PinPad
- Omnifix® 5 ml syringe
- Catheter label, dressing material, gown

Code No. 4458037 (REF) Other compositions on demand, please ask your local B. Braun representative.



B. Braun Melsungen AG | Hospital Care | 34209 Melsungen | Germany
Tel. +49 5661 71-0 | www.bbraun.com | www.philips.com/healthcare