




O' what a difference
for your patients

Flexima® Active *O'* convex



Every patient is unique. They are not the same age, have different body shapes and different stomas, but they often share a common challenge:

stoma leakages with skin irritations.

More than **90%** of ostomy patients constantly worry about leakage.¹

Convexity may be a solution

The purpose of a convex ostomy appliance is to ensure that there is a good seal between the bag system and the peristomal skin.^{2,3,4,10}

Convex appliances may be appropriate for

- flush stoma (stoma at the level of the abdominal skin)³
- retracted stoma (below the level of the abdominal skin)^{4,5}
- peristomal contour with skin folds, creases, wrinkles^{6,7,8}
- soft abdominal surface^{6,7}
- stomas with high output^{4,10}

Typical benefits of soft convexity

Soft convex products provide a balance between the right amount of pressure and softness that can help seal the stoma more securely to the surrounding skin.



Good seal around
the stoma^{2,3,4,10}



Help the peristomal
skin to stay healthy¹⁰



High wearing
comfort⁴

O' what an amazing progress

What ostomy nurses say about Flexima® Active O'convex.



The Flexima® Active O'convex has advantageously replaced the rigid convexity and offers a wider range of action. When convexity is needed, soft convexity is a good choice for me.

Anne van der Drift

ET Nurse – Bichat Hospital, France



When I use Flexima® Active O'convex, I can rely on softness and my patients' chances of being protected from leakage increase.

Virginie Lhommet

ET Nurse – Bichat Hospital, France



In my experience, this bag is particularly suitable for stomas that are flat or slightly retracted. Especially if the stool is liquid, this can be used to avoid leakage and thus peristomal skin irritation.

I recommend the product especially for active and sporty people who will choose this appliance for its softness, which is a key criteria for their daily activities and quality of life.

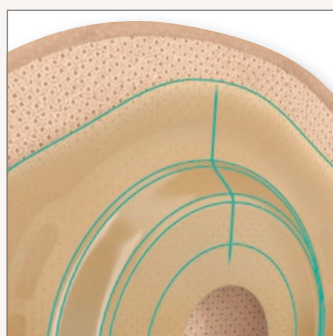
Danièle Chaumier

ET Nurse, President of the French Association AFET



O' what a great sealing⁹

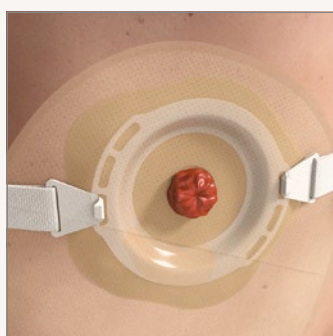
Flexima® Active O'convex can be a solution for your patients to protect them from stoma leakage and the resulting skin irritation. The convex wafer is softer than other B. Braun convex wafers and is therefore gentle to the peristomal skin.⁹



6 mm gentle slope designed to ensure a good seal around the stoma.⁹



Wafer with soft convexity designed to combine easy removal and flexibility thanks to the soft ring.

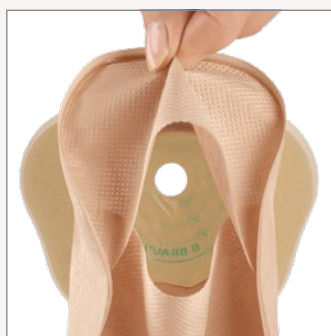


B. Braun Stoma Care Belt

A stoma belt can be used to intensify the effect of convexity.⁴ Flexima® Active O'convex offers three slots on each side for belt fixation.



In addition to their soft convexity, Flexima® Active O' convex bags feature following advantages:



Inspection window

on beige drainable bags to:

- facilitate bag application
- inspect stool quality
- check output volume



Uro outlet

The advantages during daytime

- uro-specific outlet with open/closed position
- locking system closes with audible click
- easy and hygienic handling: hands remain clean



The advantages during nighttime

- connection to a night drainage bag
- connection reinforced by a click
- universal connector with anti-twist design



Roll'up outlet

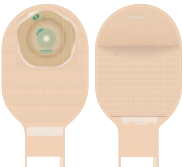
- integrated self-gripping soft clamp
- wide 7 cm outlet opening
- softened edges for increased wearing comfort once the outlet is closed
- compact bag design as a colostomy bag once the outlet is closed, to prevent bending

Flexima® Active O'convex

Ordering information

Flexima® Active O'convex Roll'up




Product	Size	Ø (mm)	Reference	Volume*
	Midi	✂ 15-45	● 4622716	± 570 ml
	Maxi	✂ 15-45	● 4622717	± 700 ml
	-	-	○ 4621716	± 700 ml

Box of 10 pieces

Flexima® Active O'convex Uro



Product	Size	Ø (mm)	Reference	Volume*
	Midi	✂ 15-35	○ 4641715	± 700 ml

Box of 10 pieces with 10 universal connectors

✂ Cut-to-fit | ○ Transparent bag | ● Split Cover/beige bag with inspection window | *All volumes are measured according to ISO 8670-2 standard
For most countries, a specific letter is added to the end of the reference number.

References:

- 1 Nafees B, Størling ZM, Hindsberger C, Lloyd A. The ostomy leak impact tool: development and validation of a new patient-reported tool to measure the burden of leakage in ostomy device users. Health Qual Life Outcomes. 2018 Dec 14;16(1):231. doi: 10.1186/s12955-018-1054-0. PMID: 30547808; PMCID: PMC6295083
- 2 Evans M, White P. Selecting convexity to improve and maintain peristomal skin integrity. Br J Nurs. 2020 Sep 10;29(16):S8-S14. doi: 10.12968/bjon.2020.29.16.S8. PMID: 32901550.
- 3 Cronin E, A guide to the appropriate use of convex stoma care products. Gastrointestinal Nursing 2013; Vol. 6, No. 2. DOI: 10.12968/gasn.2008.6.2.28803. ISSN: 14795248.
- 4 Hoeflok J, Salvadalena G, Pridham S, Droste W, McNichol L, Gray M. Use of Convexity in Ostomy Care: Results of an International Consensus Meeting. J Wound Ostomy Continence Nurs. 2017 Jan/Feb;44(1):55-62. doi: 10.1097/WON.0000000000000291. PMID: 28002174; PMCID: PMC5266410.
- 5 Hoeflok J, Kittscha J, Purnell P. Use of convexity in pouching: a comprehensive review. J Wound Ostomy Continence Nurs. 2013 Sep-Oct;40(5):506-12. doi: 10.1097/WON.0b013e3182a219b7. PMID: 24448619.
- 6 Turnbull GB, The convexity controversy. Ostomy Wound Manage. 2003 Jan;49(1):16-7. PMID: 12532029.
- 7 Young MJ, Convexity in the management of problem stomas. Ostomy Wound Manage. 1992 May;38(4):53-4, 56, 59-60. PMID: 1590908. Abstract.
- 8 Barr JE, Assessment and management of stomal complications: a framework for clinical decision making. Ostomy Wound Manage. 2004 Sep;50(9):50-2, 54, 56 passim. PMID: 15361633.
- 9 Rat P, Robert N, Fernandes I, Edmond D, Mauvais F. Evaluation of a one-piece soft convex ostomy appliance: a prospective, multicentre, open-label pilot study. Br J Nurs. 2018 Sep 6;27(16):S20-S28. doi: 10.12968/bjon.2018.27.16.S20. PMID: 30187789.
- 10 Perrin A, Convex stoma appliances: an audit of stoma care nurses. Br J Nurs. 2016 Dec 8 ;25(22):S10-S15. doi: 10.12968/bjon.2016.25.22.S10.

Commercialized and manufactured by:

B. Braun Medical SAS | 26 rue Armengaud | 92210 Saint-Cloud | France

Tel +33 1 41 10 53 00 | Fax +33 1 70 83 45 00 | www.bbraun.fr | www.bbraun.com

Société par Actions Simplifiée with a share capital of 31,000,000 Euro | RCS Nanterre 562050856



www.bbraun.com/flexima-active-o-convex

These Class I medical devices are in accordance with MDR (EU) 2017/745 and CE self-certified on this basis. Read the instructions on the package insert and the label of each medical device carefully. Flexima® Active O'convex bags and B. Braun Stoma Care Belt are manufactured by B. BRAUN MEDICAL SAS. Non-binding documents and photographs. This document, its content, including institutional data, information, trademarks and logos mentioned herein are the exclusive property of B. Braun. Any representation and/or reproduction of this document and its contents, in whole or in part, is strictly prohibited without the express prior consent of B. Braun and constitutes an infringement of the intellectual property rights of B. Braun.
For use by healthcare professionals only.