



O' what a feeling

Flexima® Active O' convex

B | BRAUN
SHARING EXPERTISE

Does this happen to you?

- Output seeps under the wafer of your bag
- Your sensitive skin becomes irritated
- General movement is restricted

You are not alone! No matter your stoma type, size, weight, or whether you are a stoma newbie or veteran, leakage can happen to anyone for numerous reasons. Uneven skin, deep folds, a slightly retracted or a flush stoma – your wafer just may not fit right.

76%

of people with stoma may experience leakage during their lifetime.¹

Up to

80%

of the ostomy population is affected by peristomal skin irritations.²



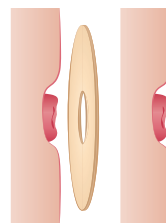


O' what a *balance*

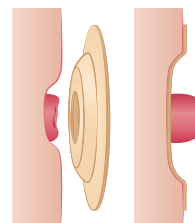
The balance between the right amount of pressure and softness can help seal your stoma more securely to the surrounding skin.

Convexity might work for you

While common wafers are flat, convex-shaped ones can help make the stoma protrude into the bag.



flat wafer



convex-shaped wafer



Common advantages
of soft convex products:

- more comfortable to wear than conventional ones
- create slight, but sufficient pressure for a good seal around the stoma
- likelihood of leakage decreases
- skin remains healthy



O' what a *flexibility*

The soft material of the wafer follows
every move you make.

Do all the things you love most again!

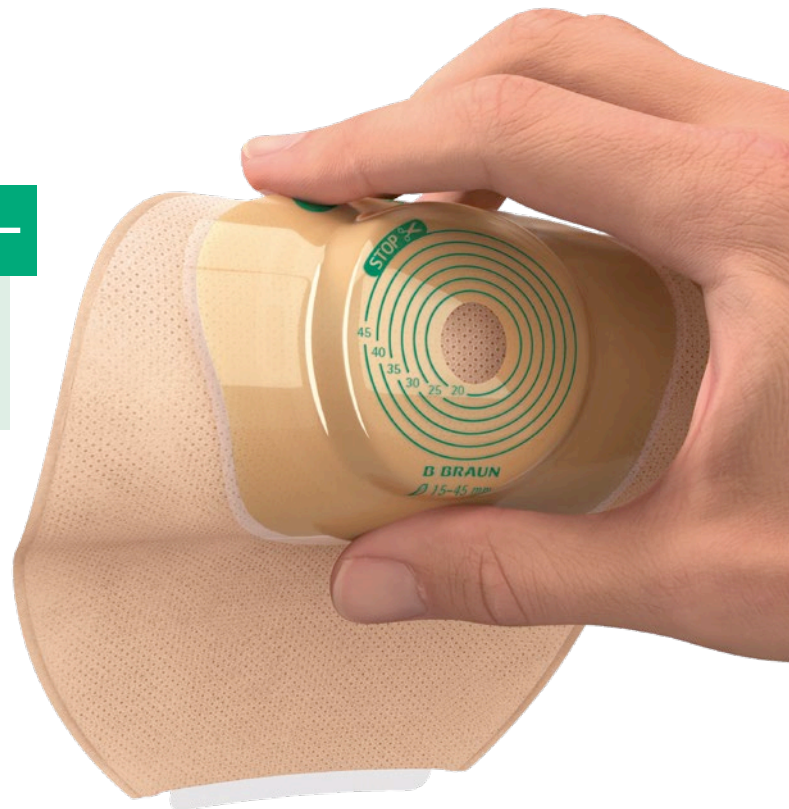
Flexima® Active O' convex – feel the difference

Discovering the soft convex product could start a new chapter in your life. When you touch the smooth and soft material, you feel a difference.

The combination of a flexible ring with a gentle slope has numerous benefits.

These are:

- smooth and soft material
- adapts to your body contours
- high flexibility³



Experience all benefits

Flexima® Active O' convex also protects your peristomal skin and it is easy to put on and remove.^{4,5} It can feel soft on the skin and may create a feeling of security.

The soft convex product is designed to adapt to your every movement and lifestyle.

Enjoy all benefits –
day and night:

- easy to put on and to remove⁵
- protects your peristomal skin
- for all types of stoma⁴



O' what a *change*

Less worries about leakage,
more time for important things
in your life!





Flexima® Active O'convex Roll'up

Designed to be particularly convenient for ileostomies and colostomies:

- easy to empty through wide 7 cm outlet
- smart closing – fold and press adhesive stripes together
- discreet bag design as it is just the size of a closed bag when folded



Flexima® Active O'convex Uro

If you have a urostomy, this may be a comfortable solution – day and night:



- uro-specific outlet with open/closed position
- locking system closes with audible click
- simple handling allows hands to remain clean



- connection to a night urine drainage bag may imply less interruption to your sleep
- connection reinforced by a click



B. Braun Stoma Care Belt

Attach a belt for a greater sense of fixation and security.



Test how Flexima® Active O' convex feels on your body.

Ask your nurse or health care professional and see what Flexima® Active O' convex can do for you!



Flexima® Active O' convex Roll'up



Size	Ø (mm)	Reference	Volume*
Midi	✂ 15-45	⊖ 4622716	± 570 ml
Maxi	✂ 15-45	⊖ 4622717	± 700 ml
-	-	○ 4621716	± 700 ml

Box of 10 pieces



Flexima® Active O' convex Uro



Size	Ø (mm)	Reference	Volume*
Midi	✂ 15-35	○ 4641715	± 700 ml

Box of 10 pieces with 10 universal connectors



✂ Cut-to-fit | ○ Transparent bag | ⊖ Split cover/beige bag with inspection window | *All volumes are measured according to ISO 8670-2 standard

References:

- 1 Evans M, White P. Selecting convexity to improve and maintain peristomal skin integrity. Br J Nurs. 2020 Sep 10;29(16):S8-S14. doi: 10.12968/bjon.2020.29.16.S8. PMID: 32901550.
- 2 Andersen NK, Trøjgaard P, Herschend NO, Størling ZM. Automated Assessment of Peristomal Skin Discoloration and Leakage Area Using Artificial Intelligence. Front Artif Intell. 2020 Sep 10;3:72. doi: 10.3389/frai.2020.00072. PMID: 33733189; PMCID: PMC7861335.
- 3 Hoeflok J, Salvadalena G, Pridham S, Droste W, McNichol L, Gray M. Use of Convexity in Ostomy Care. Results of an International Consensus Meeting. J Wound Ostomy Continence Nurs. 2017;44(1):55-62. doi: 10.1097/WON.0000000000000291.
- 4 Perrin A, Convex stoma appliances: an audit of stoma care nurses. Br J Nurs, 2016 Dec 8;25(22): S10-S15. doi: 10.12968/bjon.2016.25.22.S10.
- 5 Data on file: Lukas Schaumann – Report on Flexima®/Softima® Key post-marketing user evaluation. 2005-03-23.

Commercialized and manufactured by:

B.Braun Medical SAS | 26 rue Armengaud | 92210 Saint-Cloud | France
Tel +33 1 41 10 53 00 | Fax +33 1 70 83 45 00 | www.bbraun.fr | www.bbraun.com
Société par Actions Simplifiée with a share capital of 31,000,000 Euro | RCS Nanterre 562050856

These Class I medical devices are in accordance with MDR (EU) 2017/745 and CE self-certified on this basis. Read the instructions on the package insert and the label of each medical device carefully. Flexima® Active O' convex bags and B.Braun Stoma Care Belt are manufactured by B.BRAUN MEDICAL SAS.

Non-binding documents and photographs. This document, its content, including institutional data, information, trademarks and logos mentioned herein are the exclusive property of B.Braun. Any representation and/or reproduction of this document and its contents, in whole or in part, is strictly prohibited without the express prior consent of B.Braun and constitutes an infringement of the intellectual property rights of B.Braun.