

# Infusomat® Space Line Type Dosifix®

## Drug Admixture and Application in a Closed System

### 1 Preparation of Infusomat® Space Line Type Dosifix®



1. Gather equipment, such as Infusomat® Space Line Type Dosifix®, Ecoflac® plus 1000 ml, Omnifix®, Softa® Cloth CHX 2%, SwabCap®, Omniflush® with and without SwabCap® and a tray for disposal.



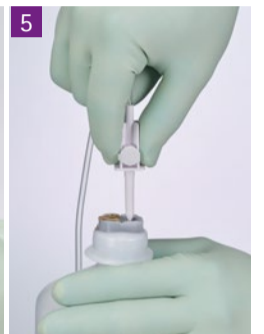
2. Take Infusomat® Space Line Type Dosifix® out of package and unfold and inspect IV line.



3. Remove protective cap from spike.



4. Remove aluminum foil from entry port of Ecoflac® plus.



5. Insert spike of Infusomat® Space Line Type Dosifix®. Use finger stopper to avoid touching connection point of spike. Close roller clamp above and below burette.

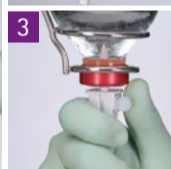
### 2 Priming of Infusomat® Space Line Type Dosifix®



1. Hang Ecoflac® plus on infusion pole.



2. With Ecoflac® plus or other collapsible containers, leave spike air vent closed.



3. With glass bottles or other non-collapsible containers, open spike venting cap.



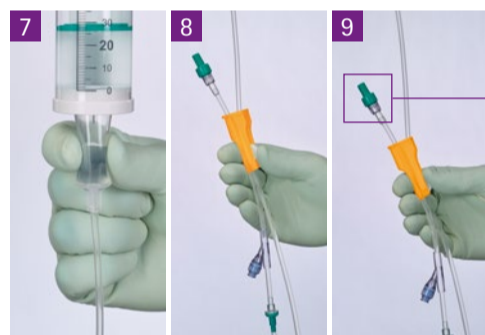
4. Open roller clamp above burette to fill it with approx. 30 ml of priming volume. Make sure that venting cap on top of burette is open.



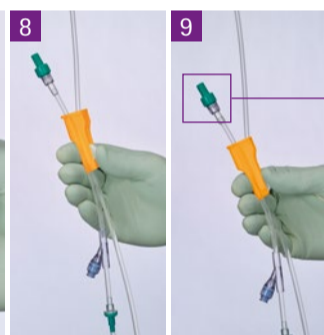
5. Swimmer inside burette serves as fluid level indicator.



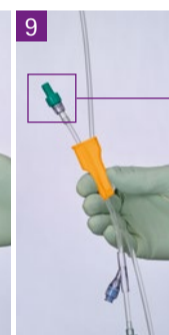
6. Close roller clamp above burette.



7. Squeeze drip chamber until half full.



8. Hang patient connector onto hook of roller clamp housing and open roller clamp below burette. Automatic priming of line due to PrimeStop.



9. Close roller clamp below burette.



#### Spin-Lock® Connector with PrimeStop

- Rotating collar of Spin-Lock® connector prevents twisting of line during connection.
- Protective PrimeStop cap lined with a hydrophobic, bacteria-tight membrane stops fluid leaks while priming the set.

### 3 Drug Admixture with Infusomat® Space Line Type Dosifix®



1. Open roller clamp above burette and fill burette up to desired volume.



2. Swimmer inside burette helps again with dosing the volume to be infused.



3. Close roller clamp above burette.



4. Disinfect Safeflow admixture port with Softa® Cloth CHX 2%. Make sure that venting cap on burette is open.



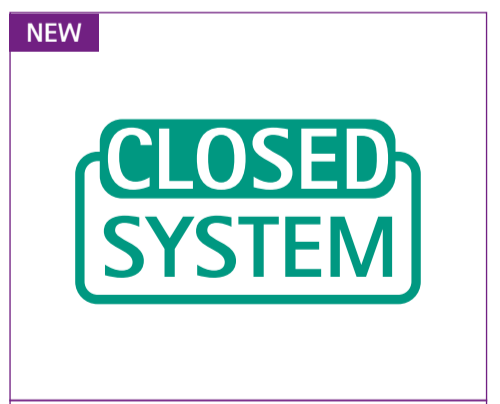
5. Connect Omnifix® containing medication, inject drug into burette, and then disconnect empty Omnifix®.



6. Apply SwabCap®.



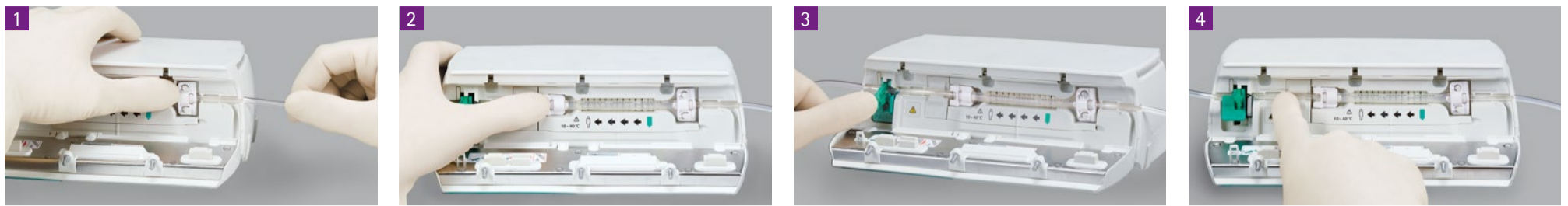
7. Hang Infusomat® Space Line Type Dosifix® on infusion pole. Use hanger for stabilization.  
*Note: Hanger included only in the PVC version.*



#### Closed System

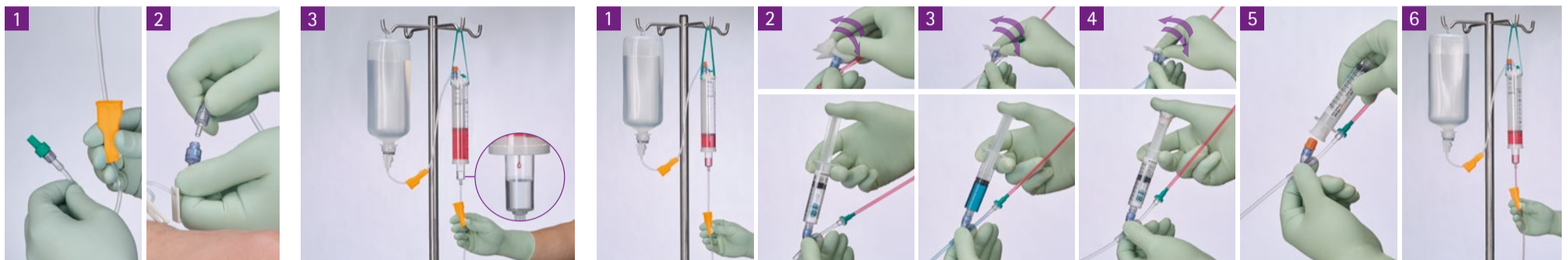
The Infusomat® Space Line Type Dosifix® forms a Closed System according to NIOSH,<sup>1</sup> as it is designed to prevent microbial ingress.

#### 4 Inserting Infusomat® Space Line Type Dosifix® into Infusomat® Space Pump



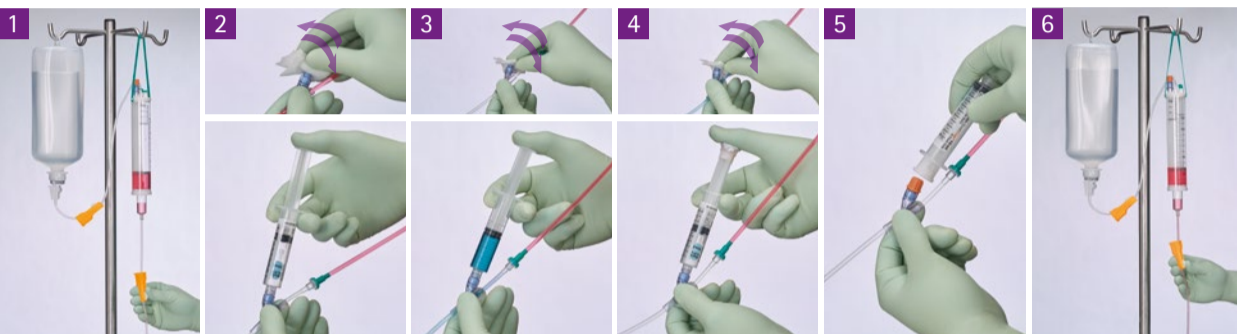
1. Always start at the right hand side and place the round clip above the two domes.
2. Do not twist the silicone segment while inserting the Infusomat® Space Line Type Dosifix®.
3. Carefully insert the green safety clamp into the opened slot of the pump.
4. Press the infusion line into the air sensor slot. Please ensure that the line is correctly positioned in the area of the air sensor.

#### 5 Connecting line to patient access device & starting infusion



1. Take tubing out of roller clamp housing.
2. Connect Infusomat® Space Line Type Dosifix® to Safeflow Extension Set.
3. Gradually open roller clamp below burette and adjust flow rate during infusion.
4. Start infusion on the pump.

#### 6 Bolus Injection



1. To give a bolus injection, close roller clamp below burette.
2. Disinfect Safeflow bolus injection port with Softa® Cloth CHX 2% and flush Safeflow bolus injection port with Omniflush®.
3. Disinfect Safeflow bolus injection port with Softa® Cloth CHX 2% and inject drug.
4. Disinfect Safeflow bolus injection port with Softa® Cloth CHX 2% and flush Safeflow bolus injection port with Omniflush® with integrated SwabCap®.
5. Apply SwabCap®.
6. Open roller clamp below burette to continue infusion, stop pump before bolus injection, and restart afterwards.

**NEW**

**AIR STOP**

Scan barcode to learn more about AirStop.

**AirStop**  
The AirStop prevents air from going into the line, thereby reducing the incidence of air alarms and also eliminating the need to program VTBI since the pump will stop when the container is empty.

#### 7 Flushing of Infusomat® Space Line Type Dosifix®



1. AirStop membrane inside drip chamber will shut off flow when drip chamber below burette has run empty to prevent air from entering the line. Close roller clamp then.
2. Take Infusomat® Space Line Type Dosifix® down from infusion pole by using the hanger and open roller clamp above burette to fill burette with neutral flushing solution (e.g. NaCl 0.9%).
3. Swimmer inside burette helps with dosing the flushing volume.
4. Close roller clamp above burette.
5. Gently squeeze drip chamber until half full and hang up Infusomat® Space Line Type Dosifix® on infusion pole again. Use hanger for stabilization.
6. Open roller clamp below burette to flush IV line.
7. AirStop membrane will stop infusion again when drip chamber below burette has run empty. Close roller clamp below burette then, stop pump before flushing, and restart afterwards.

#### 8 Ending Infusion



1. Disconnect Infusomat® Space Line Type Dosifix® from Safeflow Extension Set.
2. Activate Omniflush® with integrated SwabCap® and flush Safeflow Extension Set.
3. Apply SwabCap® to Safeflow.
4. Take down empty Ecoflac® plus and keep it in an upright position.
5. Remove spike.
6. For safe disposal insert spike into roller clamp housing protection above burette. Close roller clamp.

1. National Institute for Occupational Safety and Health (2004): NIOSH alert 2004-165. Preventing occupational exposures to antineoplastic and other hazardous drugs in health care settings, CDC, Cincinnati, OH.