
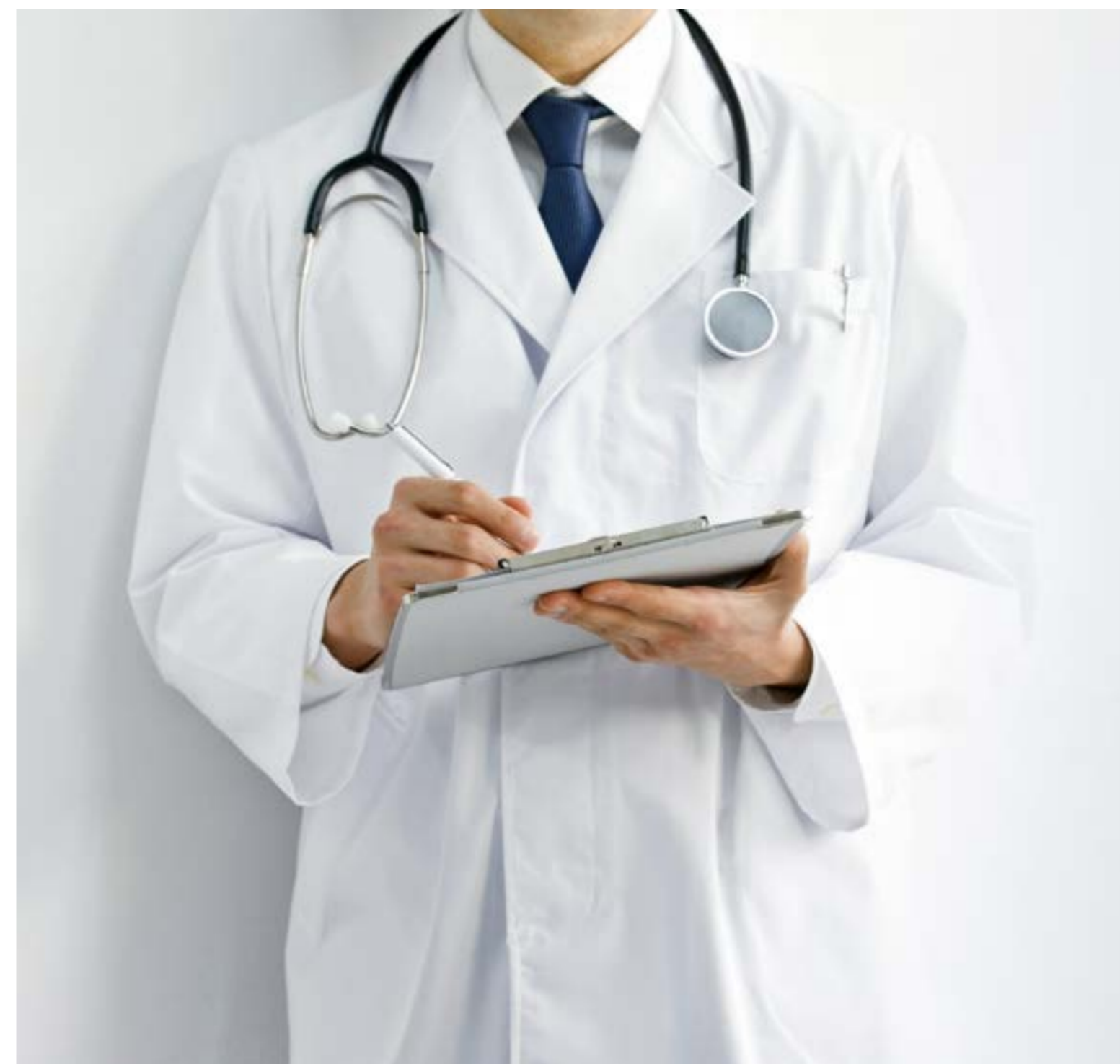


Actreen SafeSet®

Ordering information

	CH	Reference	Units/box
ACTREEN SAFESSET® Nelaton 47 cm			
	10	234 210	50
	12	234 212	50
	14	234 214	50
	16	234 216	50
	18	234 218	50



How to use it?

ACTREEN SAFESSET®

YOUR PARTNER FOR NAUTI PREVENTION

B.Braun Medical S.A.S. | RCS Nanterre 562050856
204, avenue du Maréchal Juin | 92660 Boulogne-Billancourt Cedex France
www.bbraun.com/continence-care-and-urology

The content of this document, in particular the data, the information, the trademarks and the logos are B BRAUN MEDICAL SAS's sole property and are protected under copyright ©2013, B BRAUN MEDICAL, all rights reserved. Consequently, all representation and/or reproduction, whether in part or in full, is forbidden and would be considered a violation of B BRAUN MEDICAL SAS's copyright and other proprietary rights.

The products commercialized by B BRAUN MEDICAL shall exclusively be used in accordance with the package inserts which have been updated and included in the boxes.

For healthcare professional use
Ref: Z600729 06/2017

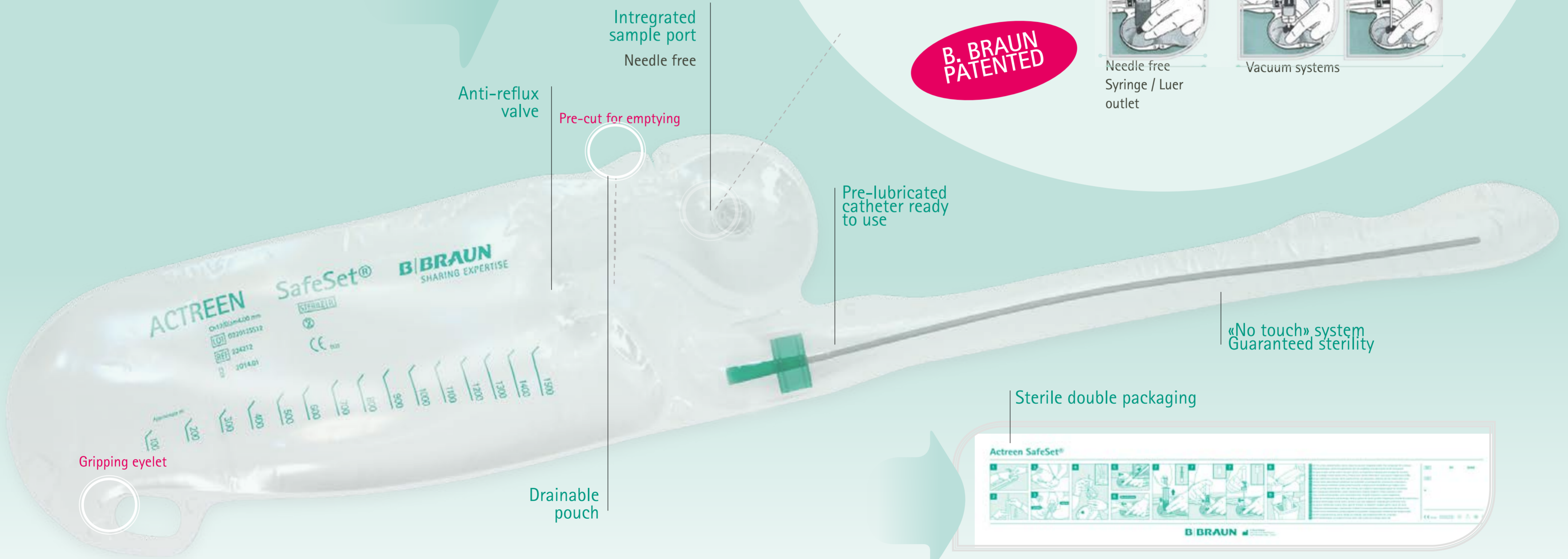
Actreen SafeSet®

is a ready to use set for urinary catheterisation at Hospital, with integrated needle free urine sample port.

Integrated needle free sample port to prevent cross contamination

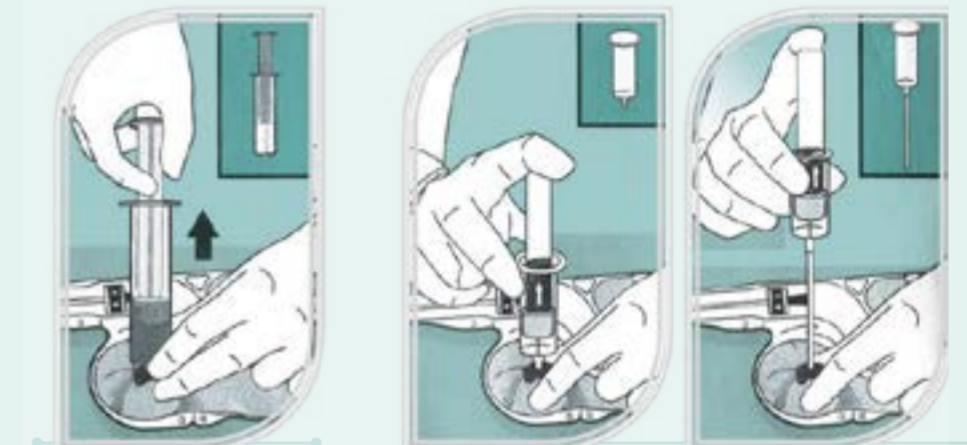
Closed system - All in One:

Catheter + pouch sealed together, no possibility of detachment



Reliable diagnosis for an improved antibiotic therapy management

Suitable for use with different urine sampling devices



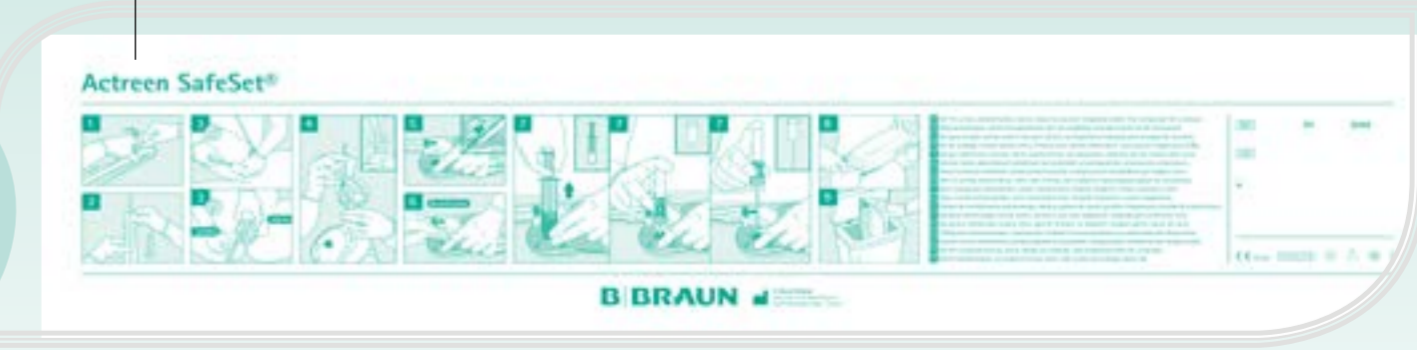
Needle free Syringe / Luer outlet

Vacuum systems

B. BRAUN PATENTED

«No touch» system
Guaranteed sterility

Sterile double packaging



Actreen SafeSet® How to use it?

1 PREPARATION CATHETERIZATION

- Patient preparation
 - Hands disinfection
 - Genitourinary area cleaning
- Should be done according to your implemented protocol

1. Open the sterile packaging by tearing off the peel pouch and use it as a sterile drape during the procedure.



2. To release the catheter tip open at mark A to use the «No touch» system. If you want to release the complete catheter, tear off at mark C. **The catheter is pre-lubricated and ready to be used.**



3. Proceed to catheterisation without touching the catheter. When the urine stops flowing into the bag, remove the catheter.



2 PREPARATION URINE SAMPLING

4. Bring the urine into the top of the pouch by pulling up the bottom of the pouch to fill the urine sample port area.



5. Press on the sample port in order to avoid air bubbles underneath.



6. Disinfect the sample port before taking the urine sample.



URINE SAMPLING

7. Insert the outlet into the sample port. Proceed with the sampling according to the device:



With needle free syringe / luer outlet

With vacuum systems



The urine sample is ready for urinalysis.

8. Tear off at mark D to release the sample port area & empty the bag.

