

# Introcan Safety<sup>®</sup> Deep Access

## Cannulation under ultrasound

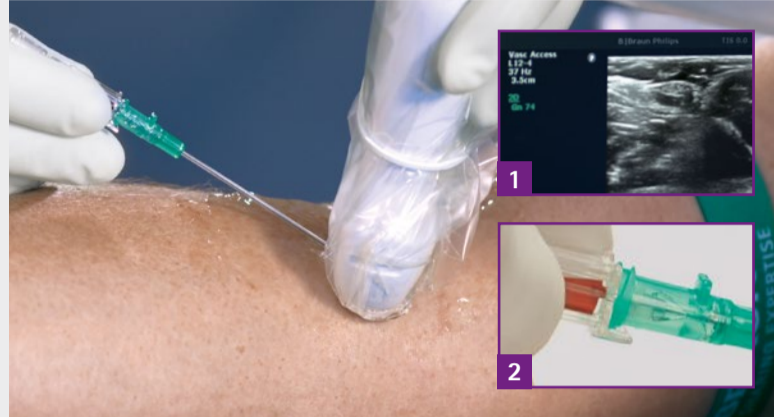


### PREPARATION & PRE-SCAN

- Confirm all items are accessible for IVC insertion and stabilization
- Check position of patient and device – align the display of ultrasound device in direction of cannulation
- Apply gel to probe
- Differentiate anatomic structure & identify appropriate insertion site

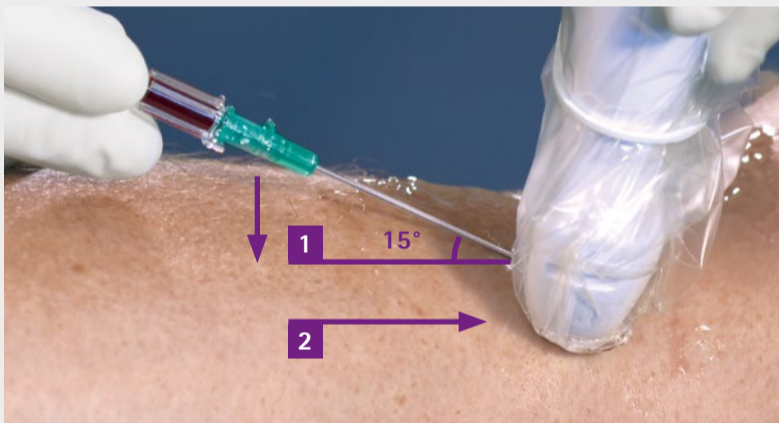
### PRE-INSERTION

- Prepare sterile field
- Disinfect puncture site according to organizational policies
- Cover probe & apply gel
- Find predefined vessel



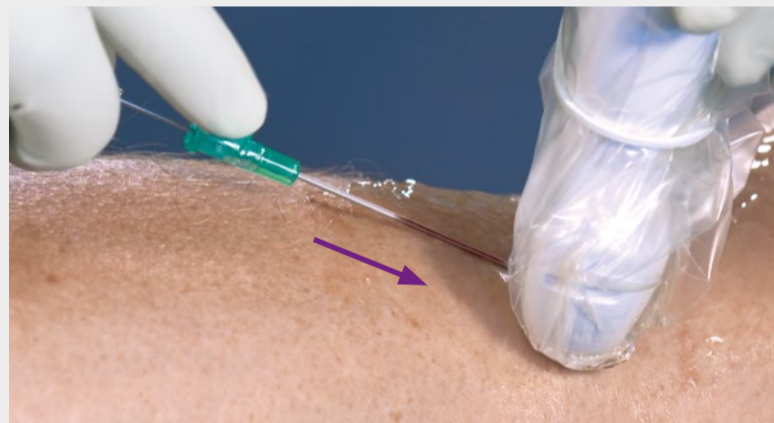
### INSERT AND OBSERVE

- Adjust angle of insertion and access vessel
- Confirm that needle tip is in vein via ultrasound **1**
- Observe first flashback of blood in flashback chamber **2**



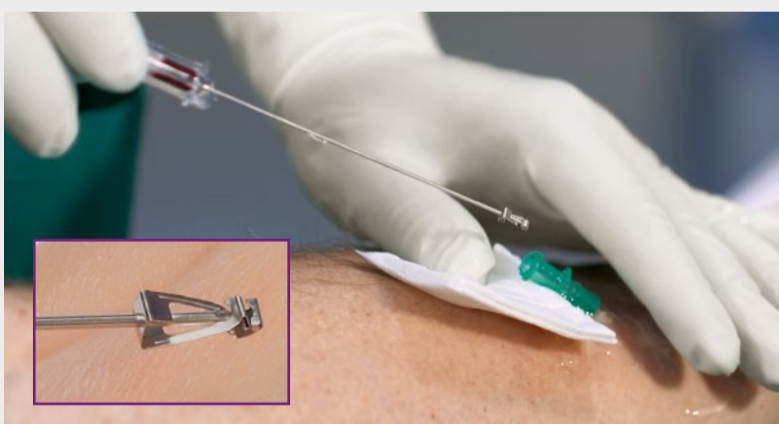
### LOWER AND ADVANCE SLIGHTLY

- Lower catheter to 15° angle **1**
- Advance the catheter and needle unit slightly to ensure catheter tip is in vessel **2**



### ADVANCE CATHETER

- Use the push-off plate to advance catheter off the needle slightly
- Observe second flashback of blood (catheter flash) between needle and catheter to confirm catheter is in the vessel
- Continue advancing the catheter off the needle into the vessel



### OCCLUDE AND REMOVE NEEDLE

- Make sure to put down the ultrasound probe and free your hand to occlude the vein
- Remove the needle while occluding the vein and discard the shielded needle



### CATHETER STABILIZATION

- Prime the extension line and connect device to the catheter hub
- Flush the catheter
- Stabilize catheter and apply sterile dressing according to organizational policies